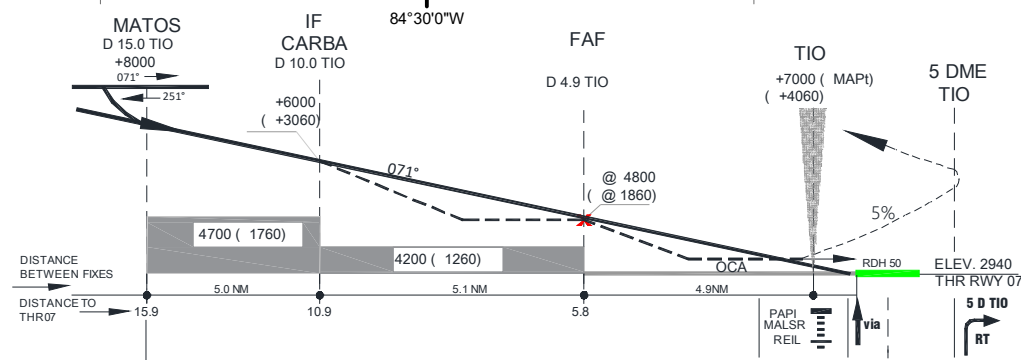
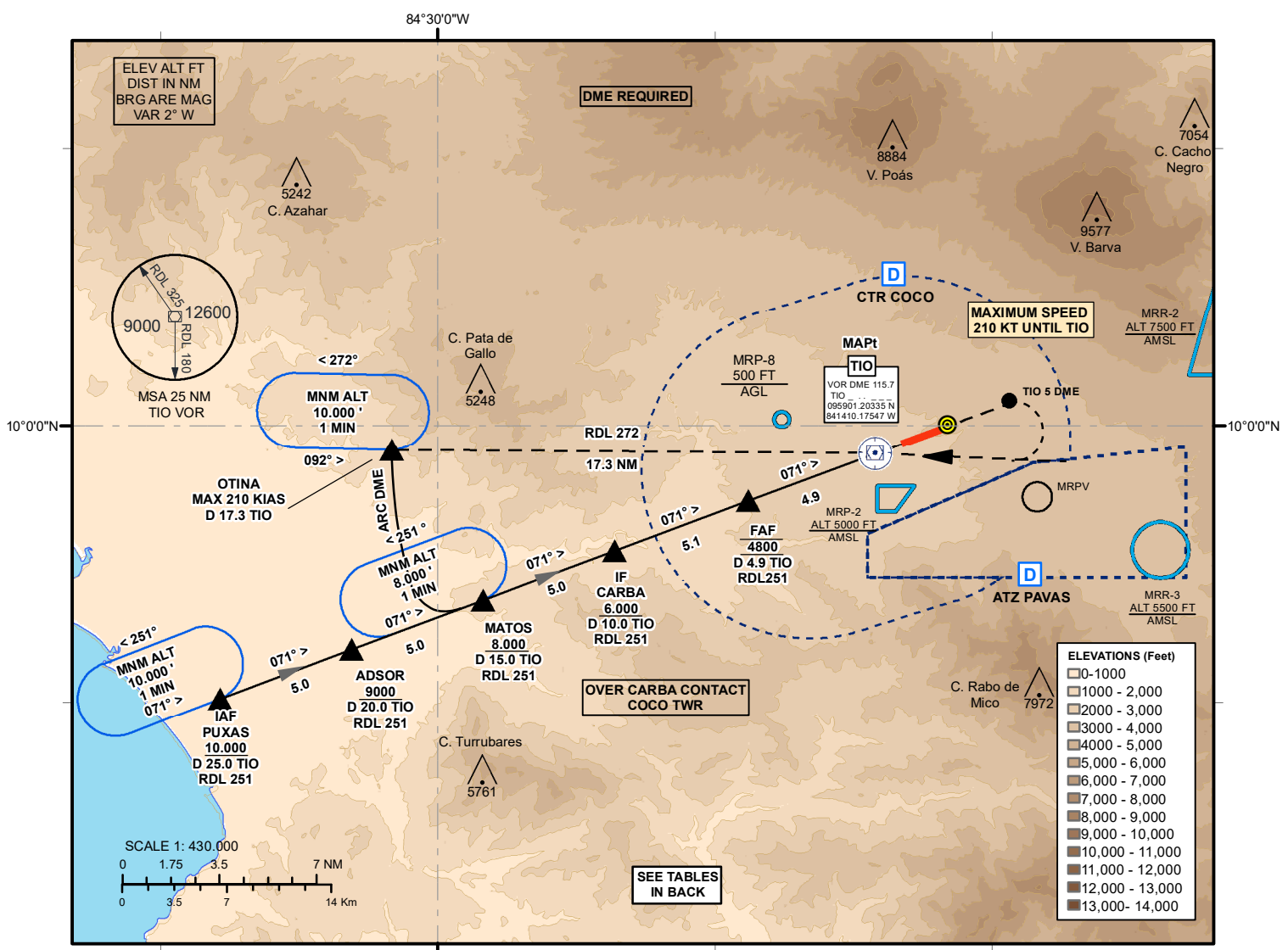


**INSTRUMENT APPROACH  
CHART**

**ALAJUELA, Intl (MROC)  
VOR DME RWY 07**

FINAL APP COURSE 071°  
OCA (OCH) 3600' (3660')  
AD. ELEV 3048 ft  
THR RWY 07 ELEV 2940 ft  
T.A. 19.000 ft

COCO ACC (R) 119.6  
COCO APP (R) 120.5  
COCO TWR 118.6



**MISSED APPROACH:**  
CLIMB ON RDL 071 UNTIL 5 DME FROM TIO VOR. THEN TURN RIGHT TOWARDS TIO VOR AND CROSS IT AT 7000' OR ABOVE. LEAVE TIO ON RDL 272 UNTIL OTINA. CLIMB TO 10000' AND HOLD AS PUBLISHED

**FOR OBSTACLES CLEARANCE:**  
RATE OF CLIMB 300 ft/NM,  
MAX SPEED 210KT  
BANK ANGLE 20°

OCA (OCH)	CAT	A	B	C	D	CIRCLING		
<b>PISTA 07</b> STRAIGHT IN APPROACH		3600 (660)				APP RWY25, See Cyrus Visual Procedure (MROC AD11.1)		
Ground Speed	KT	70	90	100	120	140	160	180
VSP 5,13% (2.94°)	FT/MIN	363	467	519	623	727	831	935
FAF - MAPt: 4.9 NM	MIN:SEG	04:12	03:16	02:56	02:27	02:06	01:50	01:38